



St Jude's Catholic Primary School
 St Jude's Close Maypole
 Birmingham B14 5PD
 Web-Site: www.stjuderc.bham.sch.uk
 Autumn Term 2022 16th December 2022
 Newsletter No 14

We live, love and learn together joyfully, in Jesus' name.

Christmas Wishes

As the end of term approaches, I would like to thank you for support this term. As always, it has been busy in school and staff and students are looking forward to a rest and spending time with loved ones. We have had lots going on in including an Ofsted Inspection which hi-lights many positives for the school and noted that it is 'a thoroughly caring and safe place to learn.'

This is one of the busiest weeks of the year in school. It is a time of great celebration for our Catholic community, and this has been evident in the beautiful work which we have seen the children produce this week. We have all taken great delight in seeing the joy on the children's faces as the many special things going on in school.

I hope that over the holidays you all enjoy spending time together creating happy memories. I think that we all want to hug our children a little tighter and keep them a little closer this week as we reflect on the tragedy in Solihull last Sunday where children lost their lives so tragically. Please keep these little boys and their devastated families in your thoughts and prayers.

The new term for students starts on **Wednesday 4th January at normal time** and we look forward to welcoming everyone back. May God bless you and your families over the coming weeks. I hope that everyone stays safe and well over the school break.



Attendance Raffle Winners

All pupils whose attendance was above 90% this term were entered in to a raffle this week. Whilst 91% is still not the anticipated figure of at least 96%, we do recognise that illness at this time of year can play it's part in attendance. We have also made allowances for some extenuating circumstances. Congratulations to the families of pupils who won some great goodies and fabulous Argos vouchers to spend over the holidays!

Headteacher Awards

Congratulations to the pupils in school who received a special Headteacher Award in assembly this morning in recognition of their efforts to be Faith-filled and Hopeful.



WHOLE SCHOOL ATTENDANCE

| Class | Rec | Year 1 | Year 2 | Year 3 | Year 4 | Year 5 | Year 6 | Whole School |
|-------------------|-------|--------|--------|--------|--------|--------|--------|--------------|
| This Week | 81.3% | 75.4% | 83.6% | 91.3% | 95.7% | 89.4% | 91.5% | 87.1% |
| This Term | 91.4% | 93.8% | 93.1% | 94.4% | 94.1% | 95.8% | 93.0% | 93.7% |
| Whole Year | 91.4% | 93.8% | 93.1% | 94.4% | 94.1% | 95.8% | 93.0% | 93.7% |

Christmas Joy at St. Jude's

Pupils (and staff!) have thoroughly enjoyed themselves at school this week. After so much disruption in recent years, it has been wonderful to have the school come so alive and back to normality. Christmas dinner days were a triumph and everyone certainly tucked in—there was so much choice, we were truly blessed. The Nativity play prepared by Year One was lovely in its simplicity and the children prepared a wonderful retelling of the birth of Christ. I know that there are many proud parents and other family members who joined us in church to see the production. Nursery and Reception wowed us all with the Christmas sing a long this week too. Our chaplaincy group brought the gift of giving in to the local community with some deliveries to Manningford Hall, and Cherry Lodge. And of course, the week reached an exciting end for the children as they had their class Christmas parties on Thursday afternoon followed by the Christmas Boutique on Friday morning. There was even a visit from Santa! An action packed week and some well-deserved fun for the children after all of their hard work this term!



FUTURE DATES

Some dates for your diary:

January 3rd—Teacher Day – School closed to pupils

January 4th—Pupils return to school

January 28th—**First Confession** after 11am mass, St. Dunstan's Church

February 7th—**SACRAMENT OF CONFIRMATION FOR BAPTISED CATHOLICS IN Y6 AT ST.DUNSTAN'S CHURCH, 7PM**

February 17th—Pupils break up for half-term

February 27th—Pupils return from half-term break

March 31st—end of Autumn term, school closes, optional 1pm finish.

April 17th -Teacher Day – School closed to pupils

April 18th—Pupils return to school

May 1st—May Day Bank Holiday

w/c May 29th—Half-term week

Diary Dates



This is certainly a message that was shared with pupils in school this week after recent tragic events. Please re-enforce this message at home over the school break.

CHRISTMAS MASSES St. Dunstan's: Christmas Eve—5.00pm Vigil Mass of Christmas, 11.30pm Carols and Readings
Midnight—Solemn Mass of the Nativity Christmas Day—9.00am Mass of the Dawn (said Mass) 11.00am—Sung Mass with carols and children's visit to the crib
St. Jude's: Christmas Eve—7.00pm Vigil Mass of Christmas **Christmas Day**—10.00am Mass of the day

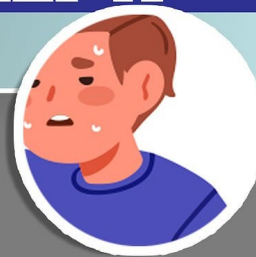
THE SYMPTOMS OF STREP A



RASH



SORE THROAT



FLUSHED CHEEKS




MUSCLE ACHES



FEVER



SORES ON SKIN

 UK Health Security Agency

[#GroupAStrep](#)

Group A Strep (GAS)

Parents should trust their judgement when their child is poorly. Speak to your GP or call 111 if your child is poorly and getting worse.

Always call 999 or go to A&E if your child:

- ▶ Is having difficulty breathing - such as grunting noises or their tummy sucking under their ribs
- ▶ there are pauses when your child breathes
- ▶ child's skin, tongue or lips are blue
- ▶ is floppy and will not wake up or stay awake.

I know that there is lots of concern about Strep A across the country. Information was sent to everyone from school last week and I know that many of you have been vigilant to the signs and symptoms seeking medical advice if in doubt. I know that many GPs are being cautious too and testing for this virus. A letter was sent to all families again today and school urges everyone to be vigilant. All guidance from the Health Security Agency has been followed and we will continue to monitor information given closely. Please continue to be aware of the symptoms of Strep A.

Every year in school, we have an extra deep clean of the building from a company who use specialist 'fogging' equipment. This will take place before the new term begins in January 2023.

Stay Safe

St. Jude's Catholic Primary School

St. Jude's Close, Maypole, B14 5PD

0121 464 5069

enquiry@stjuderc.bham.sch.uk

www.stjuderc.bham.sch.uk



*We live, love and learn
together joyfully,
in Jesus' name*



Our November 2022 Ofsted inspection:

**GOOD IN
ALL AREAS**

- Leaders have ensured St Jude's Catholic Primary School is a thoroughly safe and caring place to learn.
- The school's Christian values are at its heart.
- Pupils learn about a wide range of cultures and traditions. They show respect towards each other and adults.
- Pupils behave well in lessons and at social times.
- Pupils become articulate and enthusiastic learners.
- Leaders make sure that staff are well trained in safeguarding so that they are well placed to identify pupils at risk. They take the right actions to help any pupils who are vulnerable.
- Leaders have planned learning well across the whole curriculum.
- Leaders are ambitious for what pupils, including those with special educational needs and/or disabilities (SEND), can achieve. They prepare pupils well for learning in secondary school.

Reception applications for September 2023

Make your application online **by 15th January 2023** at:
www.birmingham.gov.uk/schooladmissions

Please access help available in the community over the school break is needed.

Selly Oak Families

GreensquareAccord's Selly Oak Families team, as part of the Birmingham Children's Partnership.
For more information please search 'Birmingham Children's Partnership' at www.birmingham.gov.uk



DECEMBER 2022

Free services & support



Food support

Yardley Wood Food Bank Pantry: Every Wed: 10.15-12.45 & Fri: 9.45-11.45. Yardley Wood Baptist Church, Yardley Wood Road, Birmingham, B14 4LS. Tel: 0121 474 5814
www.yourlocalpantry.co.uk/pantry-listings/

Incredible Surplus Food Bank: Every Mon & Fri 12:00-14:00. Kings Heath Community Centre, 8 Heathfield Rd, King's Heath, Birmingham B14 7DB. Tel: 0121 464 6717
<https://incrediblesurplus.org/locations/kings-heath>

The Spearhead Trust Food Bank: Mon-Fri: 09:00-15:00 | Free hot meals on Tuesdays, collection from 12:00 – 13:30. 7030, Bells Farm Community Centre, Druids Heath, B14 5Q. Tel: 0121 433 3532

24-hour Food Bank: Noor E Huda Mosque - 10 Glastonbury Road, B14 4DR. **Please call ahead:** 0121 430 2272.

Mental health support

Birmingham Mind: Adults can get support from MIND 7 days a week. Call: 0121 262 3555. Email: help@birminghammind.org. For urgent help, contact Forward Thinking Birmingham on 0300 300 0099.

Kooth: An online wellbeing community for young people aged 11-25years, with forums, guides and counselling available. Website: <https://www.kooth.com/>

Pause: Mental health call back telephone support for 0-25yrs. Tel: 02078414470. Email: askbean@childrensociety.org.uk. Open Mon-Sat 10:00-17:00, closed Sundays and Bank Holidays. If you are in crisis contact the Access Centre on Tel: 0300 300 0099.

Umbrella: Free Sexual advice. Tel: 0121 237 5700
Website: www.umbrellahealth.co.uk.

Change Grow Live: Drug and Alcohol support service. Mon-Fri 09:00-17:00—App's only. Tel: 0121 227 5890.
Website: www.changegrowlive.org

Kikit: BME Specialist Drug and Alcohol support service. Drop-in Mon-Fri 10:00-16:00. 153 Stratford Road, Sparkhill. B11 1RD. Tel: 0121 448 3883. Website: <https://kikitproject.org>

Domestic abuse support

Women's Aid: Available every day between 09:15—17:15, apart from 26th & 1st Jan 2023.
Tel: 0808 800 0028. Email: info@bswaid.org

The **Home Options Hub** is for women at risk of homelessness from abuse. Open every day except Bank Holidays. Tel: 0808 169 9604.

Men's Advice Line: Tel/webchat emotional support, practical advice and information for men. Mon-Fri 09:00-17:00. Tel: 0808 801 0327. Email: info@mensadvice.org.uk. Website: <https://mensadvice.org.uk/>

WAITS: Birmingham domestic abuse support service. Tel: 0121 440 1443. Website: www.waitsaction.org

Places of Warm Welcome

Warm Welcome Spaces are available for people to use and visit during the winter period and beyond. Spaces are: inclusive and non-judgmental, heated and free to access. The services at each space will vary but may include: information on further support and available guidance, opportunities to participate in activities and learn new things, free internet access, computers and charging points, a friendly environment to connect with others within the community.

Northfield Community Partnership: Every Mon, Tue, Thurs & Fri, 11:00-15:00 & 16:00-19:00, Wed 09:00-17:00.
Saint Nicolas Place, 81 The Green, Kings Norton B38 8RU.
Tel: 0121 411 2157.

Billesley Ark: Every Mon-Sat 09:30-17:00. 725 Yardley Wood Road, Billesley B13 OPT. Tel: 0121 243 1392

The Cotteridge Church: Every Mon-Fri 09:00-17:00. 24 Pershore Road, South Bourville and Cotteridge B30 3EJ. Tel: 0121 433 5518.

The Spearhead Trust: Every Mon-Fri 09:00-15:00. Bells Farm Community Centre, Bells Farm Close, Druids Heath B14 5QP.
Tel: 0121 433 3532.

WE ARE HERE TO HELP FAMILIES



You can contact us via:

Phone | Text | WhatsApp us on: 07483 090434
Email: SellyOak.Families@greensquareaccord.co.uk
Follow us on social media: @SellyOakFam



For support around finance, SEND, parenting, housing, youth, Data and/or IT please contact the Selly Oak Early Help Team.